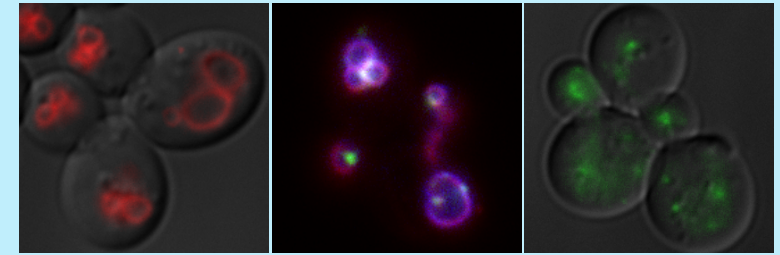


RIKEN Seminar

Dr. Lois Weisman

University of Michigan Life Sciences Institute
Department of Cell & Developmental Biology, U-M Medical School



Insights into cell-cycle progression under basal conditions and during adaptation to stress

Many key insights into general principles of cell-cycle control came from investigations in yeast. Her recent studies have revealed that in budding yeast the vacuole/lysosome plays an essential role in cell-cycle progression, specifically during progression through early G1 phase. In addition, her group discovered conditions where re-entry from a paused cell-cycle requires a non-canonical cyclin-dependent kinase.



16:00-17:00, Monday, December 2, 2019
Bioscience Building 3F Seminar Room S311

Host: Dr. Akihiko Nakano

Live Cell Super-Resolution Imaging Research Team (#5733, natsuko.jin@riken.jp)